

MAHAGONNY SONGSPIEL

DIRECTED BY DOROTHY DANNER

PHILIP CHOSKY THEATRE

OCTOBER 2011



LIGHTING DESIGN: CAT WILSON

ASSIS. LD: KAEEL GILLAM

MAN-MADE LIGHT SOURCES

Each lighting station in the beginning will be lit with a man-made light source that represents the way that character works: a desk lamp, a hard hat light, a ghost light...



Carnegie Mellon



MAHAGONNY SONGSPIEL

DIRECTED BY DOROTHY DANNER

PHILIP CHOSKY THEATRE

OCTOBER 2011



LIGHTING DESIGN: CAT WILSON

ASSIS. LD: KAEEL GILLAM



© Lucinda Surber 2001 < lucinda@lucinda.net >

Carnegie Mellon



MAHAGONNY SONGSPIEL

DIRECTED BY DOROTHY DANNER

PHILIP CHOSKY THEATRE

OCTOBER 2011



LIGHTING DESIGN: CAT WILSON

ASSIS. LD: KAEEL GILLAM





MAHAGONNY SONGSPIEL

DIRECTED BY DOROTHY DANNER

PHILIP CHOSKY THEATRE

OCTOBER 2011

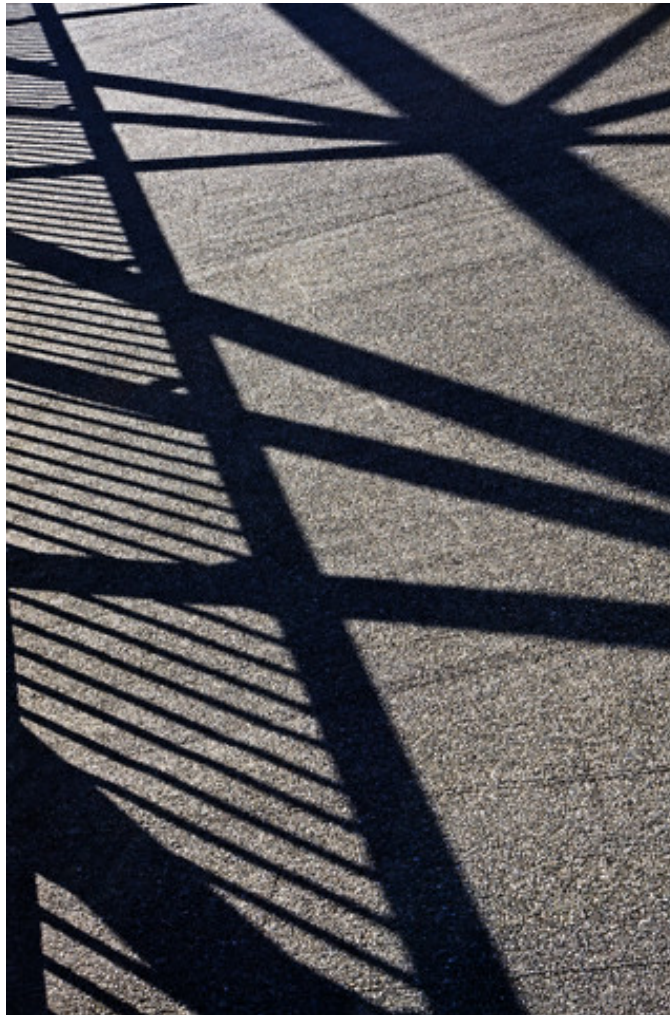


LIGHTING DESIGN: CAT WILSON

ASSIS. LD: KAEEL GILLAM

STAGE TEXTURE

The theatrical world before they set off for Mahagonny is lit with texture as if work light is shining through architectural features found backstage, for example the rigging system, the steel grid, railings, battens, etc.





MAHAGONNY SONGSPIEL

DIRECTED BY DOROTHY DANNER

PHILIP CHOSKY THEATRE

OCTOBER 2011



LIGHTING DESIGN: CAT WILSON

ASSIS. LD: KAEEL GILLAM





MAHAGONNY SONGSPIEL

DIRECTED BY DOROTHY DANNER

PHILIP CHOSKY THEATRE

OCTOBER 2011

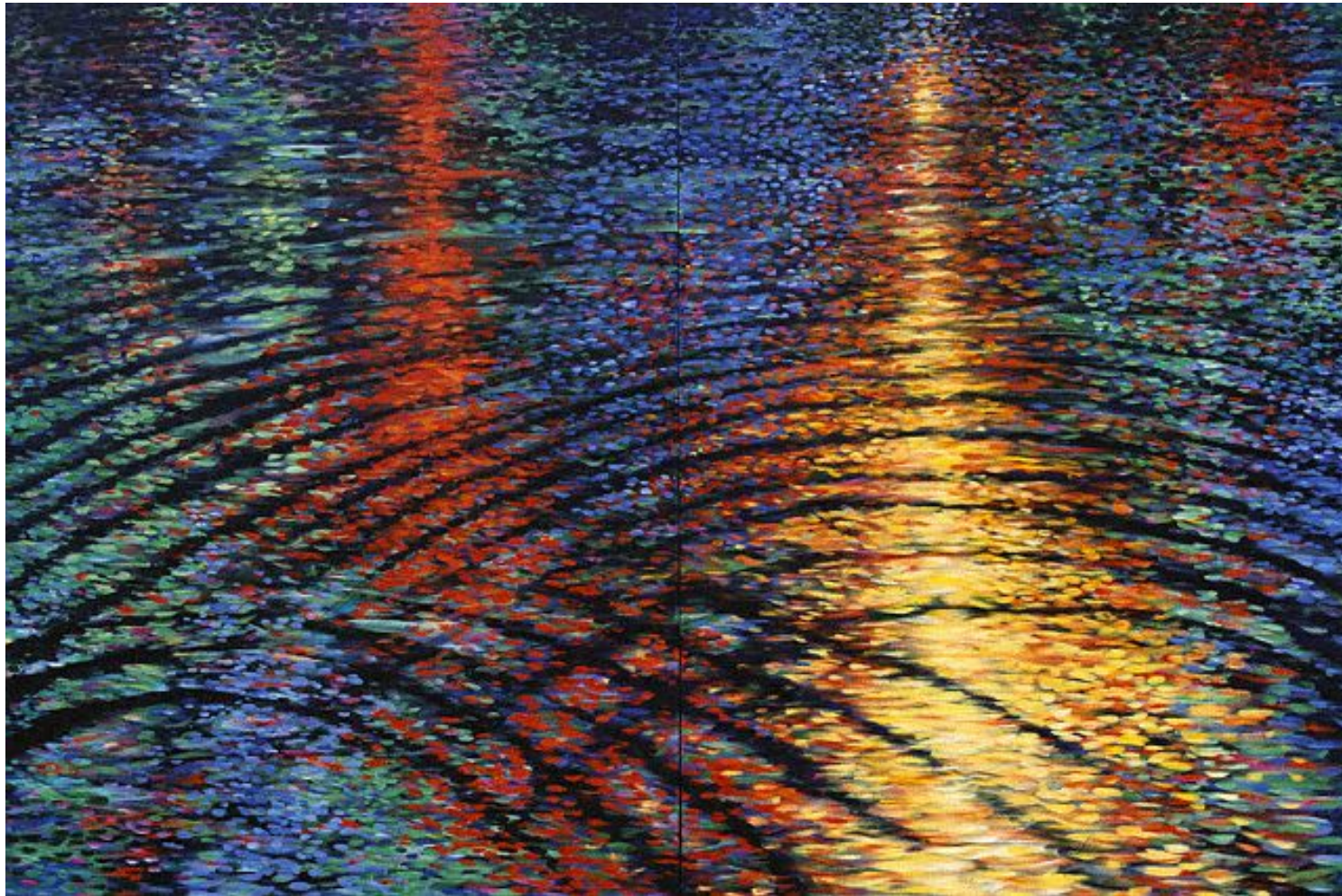


LIGHTING DESIGN: CAT WILSON

ASSIS. LD: KAEEL GILLAM

SOFT COLORFUL MAHAGONNY

The promise of Mahagonny is like seeing Las Vegas through a blurred camera lens. It is colorful, exciting, full of energy, but still soft and promising.



Carnegie Mellon



MAHAGONNY SONGSPIEL

DIRECTED BY DOROTHY DANNER

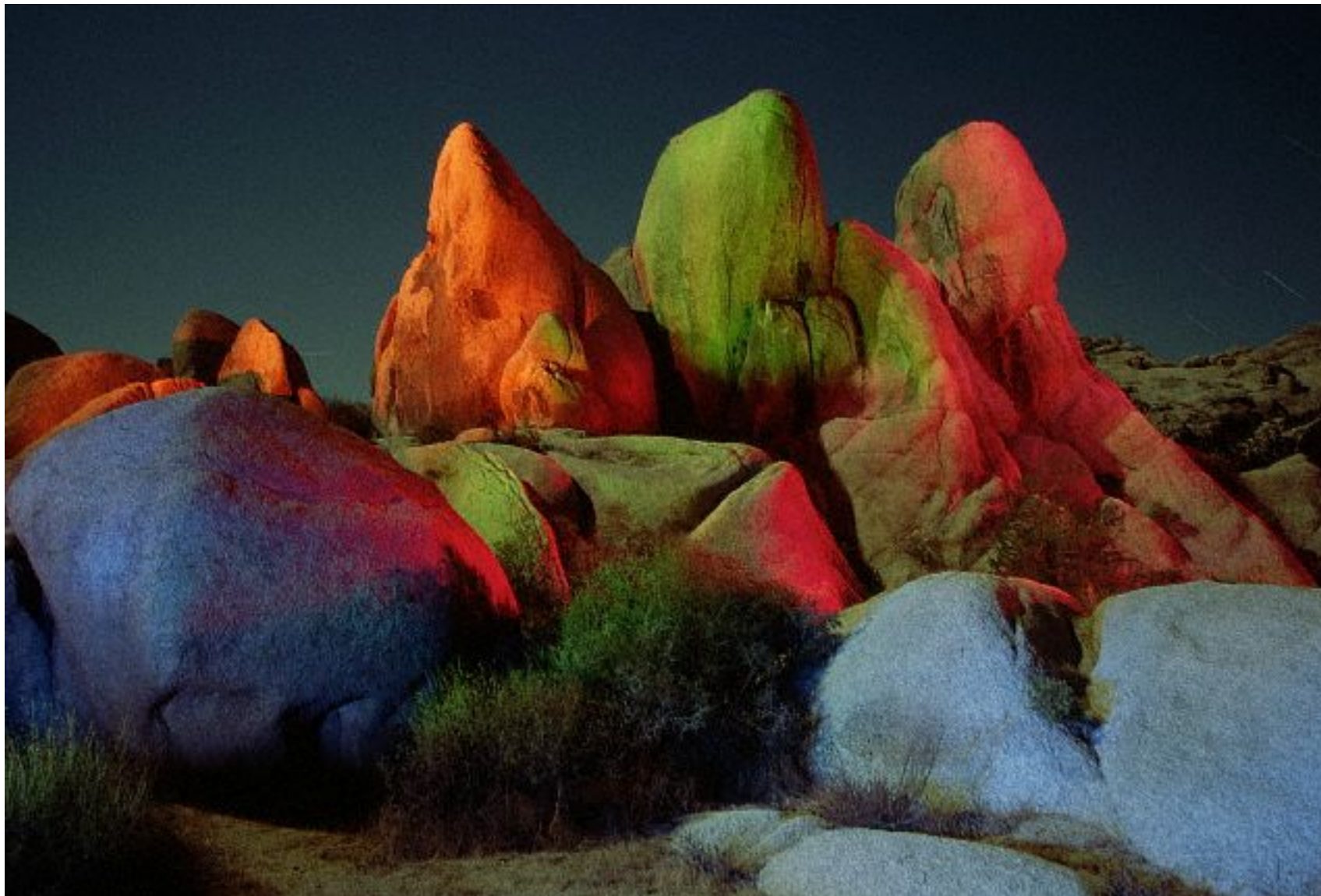
PHILIP CHOSKY THEATRE

OCTOBER 2011



LIGHTING DESIGN: CAT WILSON

ASSIS. LD: KAEEL GILLAM



Carnegie Mellon



MAHAGONNY SONGSPIEL

DIRECTED BY DOROTHY DANNER

PHILIP CHOSKY THEATRE

OCTOBER 2011



LIGHTING DESIGN: CAT WILSON

ASSIS. LD: KAEEL GILLAM



MAHAGONNY SONGSPIEL

DIRECTED BY DOROTHY DANNER

PHILIP CHOSKY THEATRE

OCTOBER 2011



LIGHTING DESIGN: CAT WILSON

ASSIS. LD: KAEEL GILLAM

TEXTURED COLOR THAT IS HARSH

After living in Mahagonny, they find out it is not everything they dreamed of. Like in Vegas, when you spend too much time around all that color and energy, it becomes overwhelming and harsh. The color becomes textured with a harsh edge resembling the theatrical texture from their old world.





MAHAGONNY SONGSPIEL

DIRECTED BY DOROTHY DANNER

PHILIP CHOSKY THEATRE

OCTOBER 2011



LIGHTING DESIGN: CAT WILSON

ASSIS. LD: KAEEL GILLAM

